



EMINSAN
GROUP



EMH


**HEAT
PUMP**






Our EMINSAN SOLAR ENERGY SYSTEMS INDUSTRY AND TRADE LIMITED COMPANY started from 1987, as a result of its R&D studies and new product studies, by producing a separate brand for each product and working on different products under the same roof as EMINSAN GROUP, these activities became more mature in 2010

We are still providing a different service to the heating and cooling sector with the Local Heat Pump products, which is a first in Turkey, with our EMH HEAT PUMP brand (all certification studies have been carried out), by renewing the production technology and technical infrastructure of all our solar energy systems and with our after-sales services at a more advanced stage, we stand by our customers.

 0 (232) 438 03 95

 www.eminsanisipompasi.com

 Yenigün Mahallesi, 292/40 Sokak, No: 7/A
Buca - İzmir

WHAT IS HEAT PUMP?

A heat pump is a type of air conditioner that can be used for both heating and cooling function. Basically, it provides the transfer of heat from one environment to another bidirectionally. The term heat pump is new to most people in the heating industry. However, refrigerators, air conditioners, dehumidifiers and freezers in our homes are products of the same logic. They can be grouped under the heading 'Heat Pump', as the working principle complies with the logic of transporting heat.

USE ENERGY MORE EFFICIENTLY AND EFFECTIVELY

In addition, heat pumps use energy more effectively than other heaters. The reason for this is simple; Its job is not to consume a fuel or energy, but to move the air. Therefore, heat pumps consume 5 times less energy than air conditioners. A heat pump reverses the refrigerant cycle, taking the energy from the outside and bringing the heat inside. The air conditioner used with this principle maintains its function even on cold days such as -15°C. Therefore, heat pumps eliminate the need for a heating system. It allows you to do both heating and cooling with the same unit, thus saving energy and costs all year round.

ONE SYSTEM, MULTIPLE SOLUTIONS

EMH HEAT PUMP is designed to work with fan coil radiator or underfloor heating. The system, which heats in winter, can also cool with fan coil in summer

USAGE AREAS:

- Hotel water heating system with Heat Pump
- Hotel room heating system with Heat Pump
- House heating system with solar powered heat pump
- Pool water heating system with solar powered heat pump
- Heat Pump Shopping malls, business centers, stadiums etc. heating system

While EMH Heat Pumps can reach very high heating and cooling capacities with their excellent efficiency ratio, on the contrary, they consume very little energy. The most important reason for this is the high energy efficiency in all the parts that make up the EMH Heat Pumps. You can adjust the temperature of the water of your home, office, hotel, pool etc. produced for heating as you wish, depending on the outdoor temperature, thanks to the superior control systems of EMH Heat Pumps.

MODEL	PHC25L	PHC35L	PHC50L	PHC60L	PHC60L	PHC80L	PHC120L	PHC150L
Refrigerant Gas	R410A	R410A	R410A	R410A	R410A	R410A	R410A	R410A
Heating Capacity* (kw)	10.0	13.0	17.0	25.0	26.0	32.0	45.0	60.0
C.O.P* (Productivity)	6.2	6.3	6.2	6.4	6.5	6.4	7.0	6.8
Heating Capacity**	7.0	9.0	12.0	16.5	17.0	22.0	29.4	40.1
C.O.P** (Productivity)	4.4	4.5	4.5	4.5	4.7	4.5	5.04	5.05
Cooling Capacity*** (kw)	6.0	8.0	10.0	15.0	16.0	19.0	45.0	60.0
C.O.P*** (Productivity)	3.8	4.0	3.7	4.1	4.4	3.9	4.5	4.5
Pool Volume**** m³	30-50	40-70	60-90	75-120	75-120	100-150	150-200	200-250
Energy-saving	%75-85	%75-85	%75-85	%75-85	%75-85	%75-85	%75-85	%75-85
Operating temperature °C	0-43	0-43	0-43	0-43	0-43	0-43	-7-43	-7-43
Recommended Flow m³/h	4-6	5-7	6.5-8.5	8-10	8-10	10-12	15-20	20-12
Working Power/Max. Power (kw)	1.4/1.8	1.8/2.4	2.4/3.1	3.8/5.6	3.8/5.6	4.5/6.3	5.8	7.9
Energy V/Ph/Hz	220-240/1/50	220-240/1/50	220-240/1/50	220-240/1/50	380-415/3/50	380-415/3/50	380-415/3/50	380-415/3/50
Working Current (A)	6.4/8.2	8.2/11	10.9/14.1	17.3/26	5.8/8.5	6.8/9.5	11.4	15.2
Heat Exchanger	T i t a n i u m							
Compressor	Rotary	Rotary	Rotary	Skrol	Skrol	Skrol	Skrol	Skrol
Fan Direction	Vertical	Vertical	Vertical	Vertical	Vertical	Vertical	Vertical	Vertical
Noise Level (db(A))	<34	<35	<38	<39	<39	<42	<45	<51.7
Connection Port (mm)	50	50	50	50	50	50	63	63
Product Size (U x G x Y) (mm)	567x380x595	567x550x640	694x689x740	694x689x740	694x689x740	740x694x950	740x694x950	740x694x950
Amb Size (U x G x Y) (mm)	1025x380x595	610x540x715	760x740x800	760x740x800	760x740x800	790x740x990	1380x530x1388	1380x530x1388
Weight Net/Gross (kg)	55/60	70/75	85/93	107/117	107/117	127/137	215/236	225/246

* : It is valid under water temperature 26°C, air temperature 26°C conditions.

** : It is valid under water temperature 26°C, air temperature 15°C conditions.

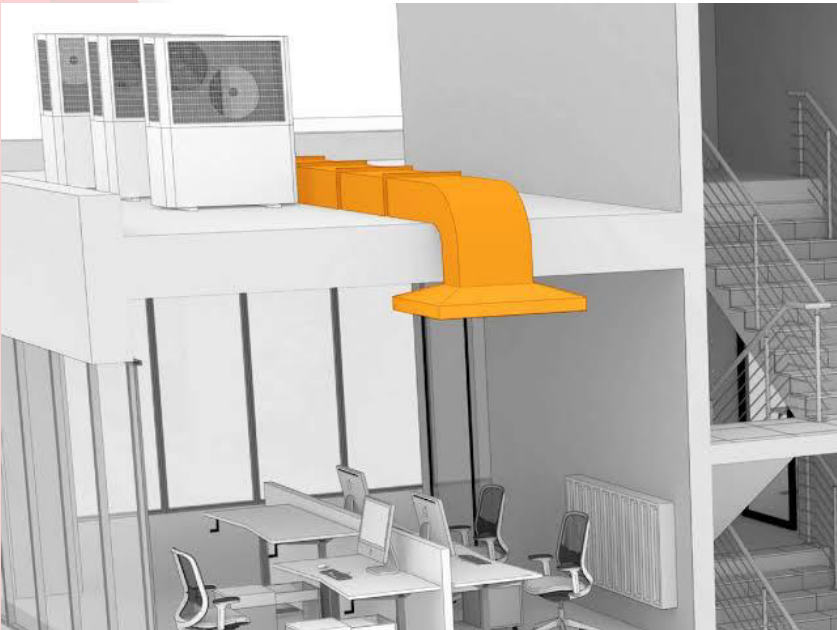
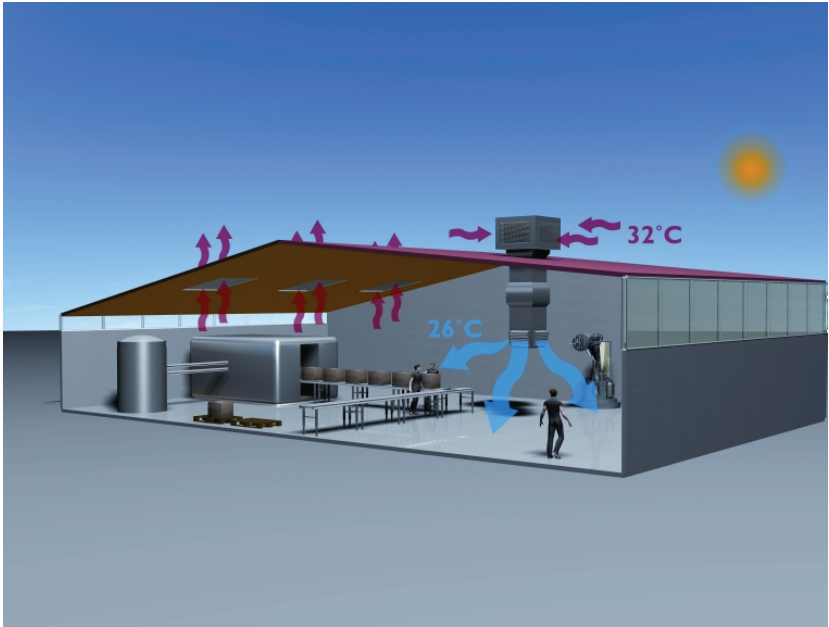
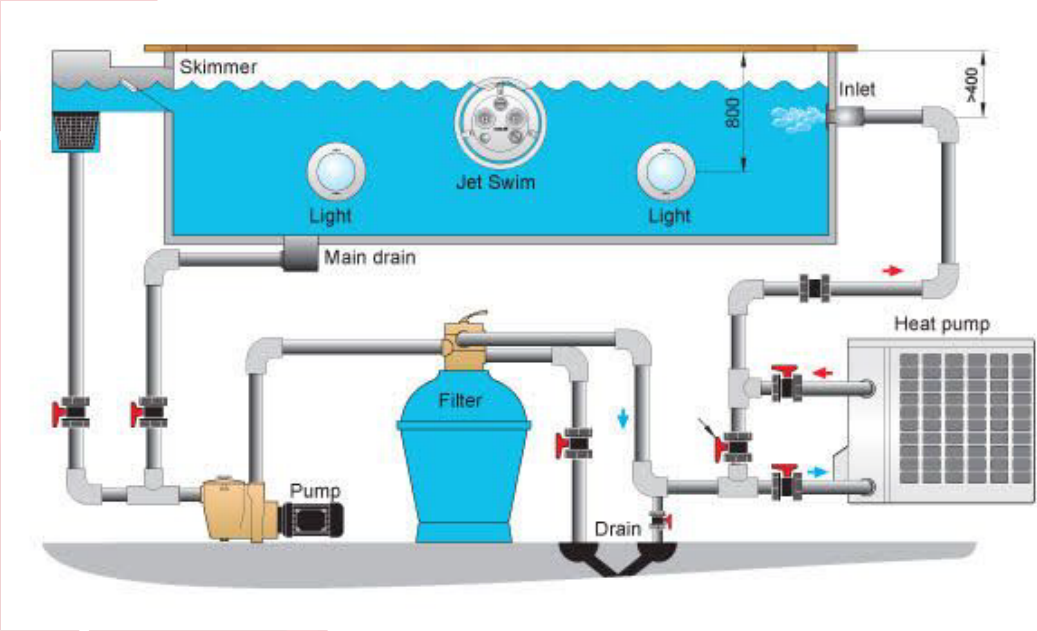
*** : It is valid under water temperature 28°C, air temperature 35°C conditions.

**** : When using an insulated pool cover.

EMH THERMA

MODEL	PH180LS
RATED FREQUENCY	380-415V 3N
REFRIGERANT	50Hz
SOUND PRESSURE LEVEL	61dB(A)
HEATING CAPACITY	80Kw
COOLING CAPACITY	70Kw
HEATING RATED INPUT	16.1 Kw
COOLING RATED INPUT	12 Kw
COP	5,9
MAX. ALLOWABLE PRESSURE	4,5 MPA
WATER FLOW	27 m3/h
WIDTH	75 cm
DEPTH	135 cm
H EIGHT	172 cm
WEIGHT	285 kg







MODEL : EMH12

FEATURES:

- 220 V
- Hot - Cold mod
- Radiator Heating 50 - 100m²
- Underfloor Heating 50 - 100m²
- The hot water production capacity is 1-2 tons.

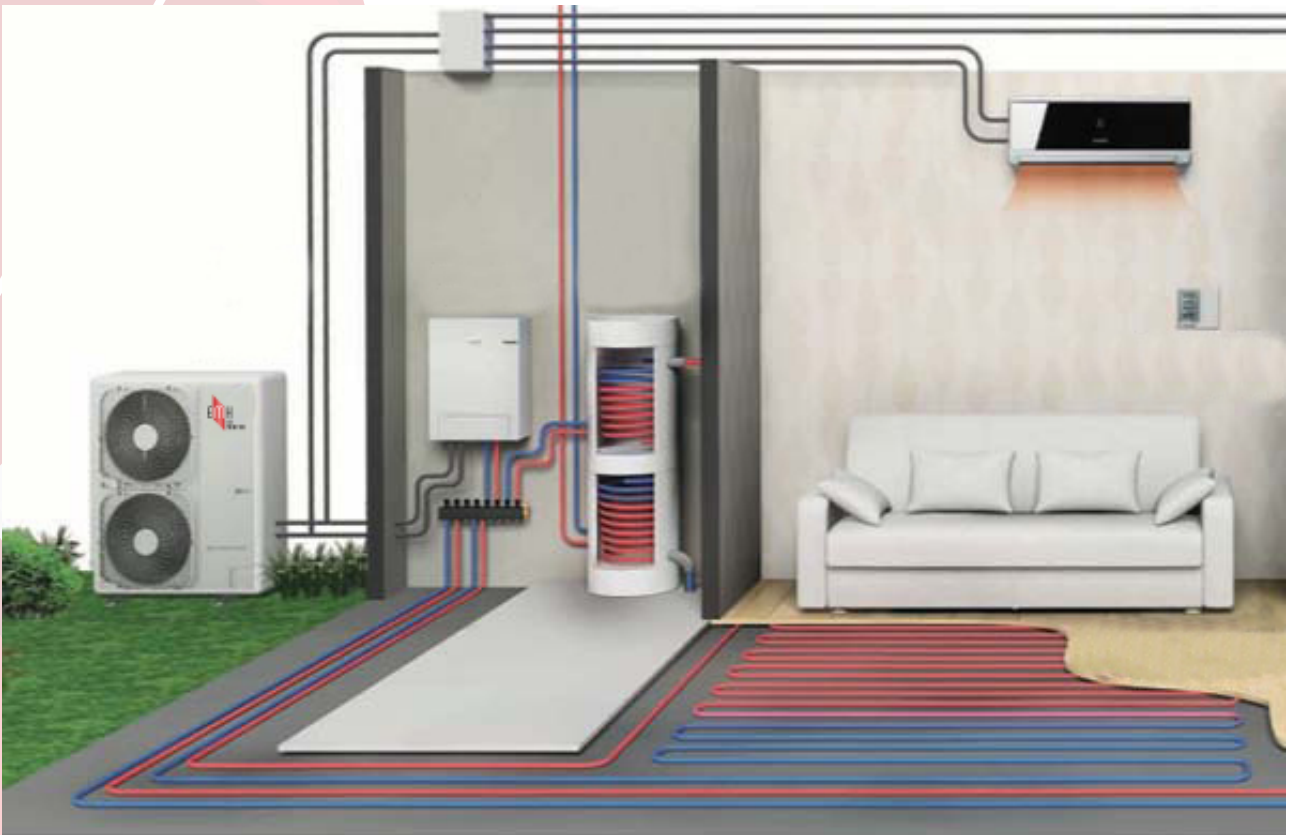




MODEL : EMH14

FEATURES:

- 380 V
- Hot - Cold mod
- Radiator Heating 100 - 150m²
- Underfloor Heating 80 - 220m²
- The hot water production capacity is 2-3 tons.

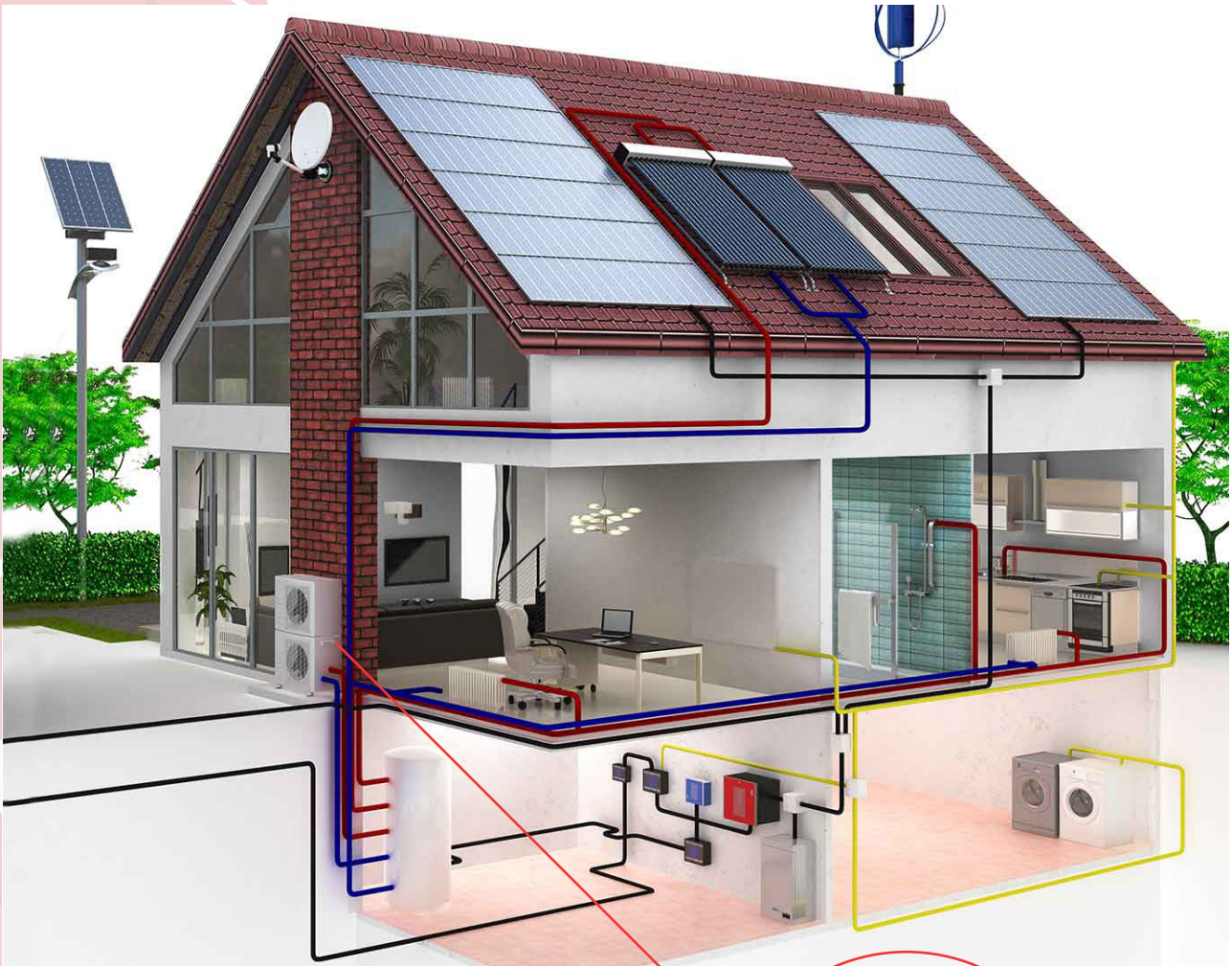




MODEL : EMH16

FEATURES:

- 380 V
- Hot - Cold mod
- Radiator Heating 120 - 180m²
- Underfloor Heating 100 - 300m²
- The hot water production capacity is 3-4 tons.



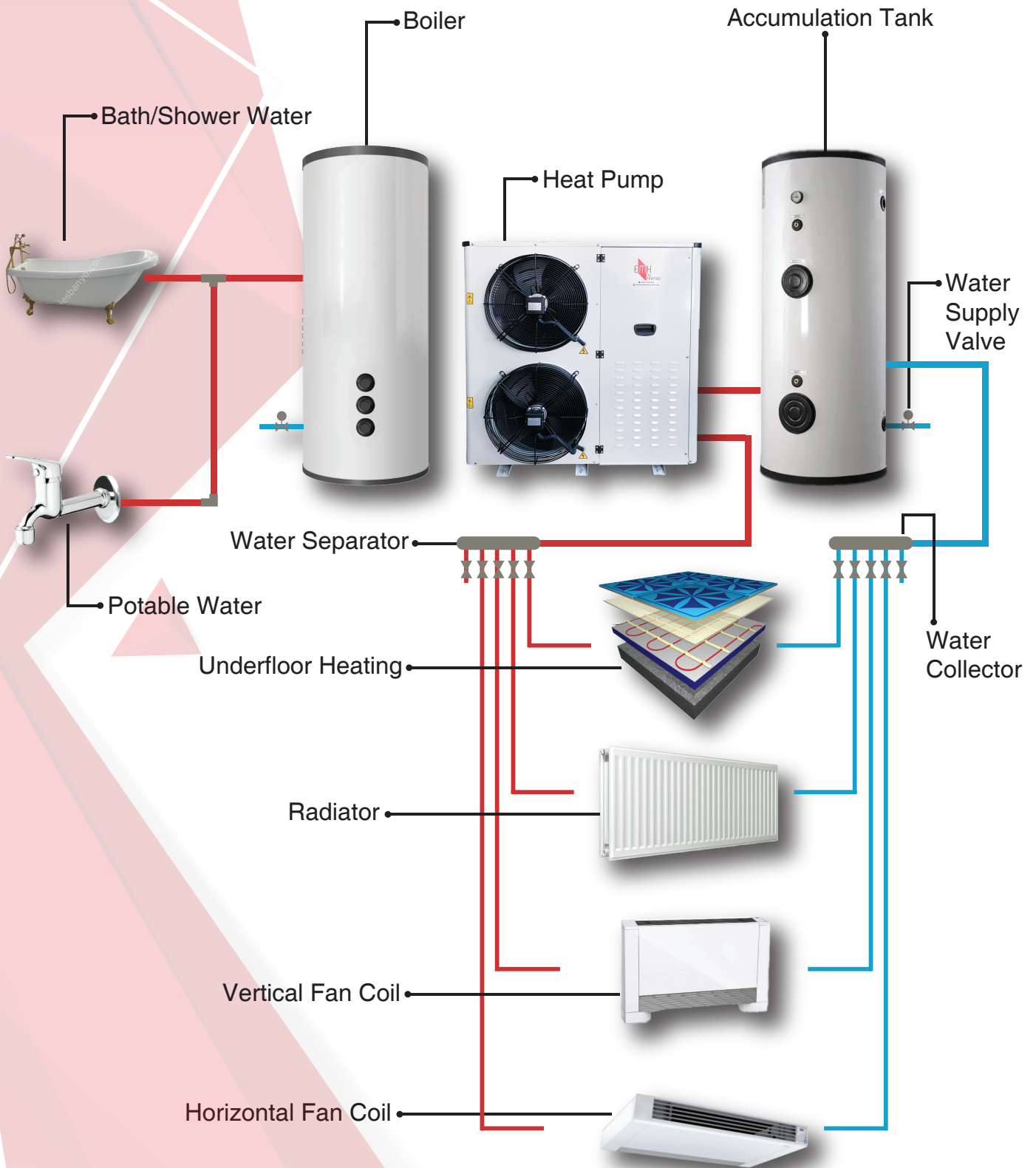


MODEL : EMH22

FEATURES:

- 380 V
- Hot - Cold mod
- Radiator Heating 120 - 250m2
- Underfloor Heating 150 - 400m2
- The hot water production capacity is 4-6 tons.

32kW, 42kW, 45kW, 70kW, heat pumps are also included in our production





MODEL		EMH12	EMH16	EMH22	EMH42
NOMINAL HEATING CAPACITY (kW)		12	18	21	36
HOT WATER CAPACITY (it/h)		1-2 ton	3-4 ton	4-6 ton	5-7 ton
COOLING CAPACITY (kW)		3,5	4,5	8	12
NOMINAL CAPACITY (kW)		4,5	6,5	10	15
ENERGY (V-Hz)		220/380-50	380-50	380-50	380-50
OUTPUT WATER MAX. TEMPERATURE (°C)		60	60	60	60
COP		4	4	4	4,5
SOUND (dB(A))		54	55	60	60
MEASUREMENTS H*D*W (mm)		1115*680*425	1270*1120*490	1270*1120*490	1450*1060*760
PACKAGE SIZES H*D*W (mm)		1155*865*465	1350*1200*520	1425*1200*520	1520*1230*800
WEIGHT (kg)		122	175	240	320
GAS USED		410	410	410	410
WORKING ENVIRONMENT TEMPERATURE (°C)		-20 - +45	-20 - +45	-20 - +45	-20 - +45
ADDITIONAL ELECTRIC HEATER (kW)		3	3	3	3
AIR WELDING HEAT EXCHANGER	TYPE	FINNED TUBE HEAT EXCHANGER	FINNED TUBE HEAT EXCHANGER	FINNED TUBE HEAT EXCHANGER	FINNED TUBE HEAT EXCHANGER
	FAN TYPE	AXIAL FLOW FAN	AXIAL FLOW FAN	AXIAL FLOW FAN	AXIAL FLOW FAN
HOT WATER HEAT SIDE EXCHANGER	TYPE	SHELL-AND-TUBE HEAT EXCHANGER	SHELL-AND-TUBE HEAT EXCHANGER	SHELL-AND-TUBE HEAT EXCHANGER	SHELL-AND-TUBE HEAT EXCHANGER
	WATER FLOW (L/h)	3000	5500	6000	10000
	WATER PRESSURE	40	48	48	54



KIOSCERT® CERTIFICATE

Bu Sertifika / This certificate is granted to the organization

EMİNSAN GÜNEŞ ENERJİSİ İNŞ. VE MALZ. NAK. GIDA HAY. TEKS. SAN. VE TİC. LTD. ŞTİ.

Yeniğün Mah. 292/40 Sok. No: 7/A Buca / İzmir / Türkiye

KIOSCERT Belgelendirme tarafından denetlenmiş ve uygulamakta olduğu
Müşteri Memnuniyeti Yönetim Sisteminin
Is audited by KIOSCERT Certification and applied
Customer Satisfaction Management System meet the requirements of

ISO 10002:2018

standardına aşağıdaki kapsamda uymakta olduğu gözlenmiştir.
Standard for the following activities.

Belgelendirme Kapsamı / Certification Scope

GÜNEŞ ENERJİSİ, SICAK SU ÜRETİMİ, GÜNEŞ ENERJİSİ ELEKTRİK ÜRETİMİ,
RÜZGAR ENERJİSİ ELEKTRİK ÜRETİMİ, ISI POMPASI İMALATI VE UYGULAMASI,
ÇATI UYGULAMALARI ÜRETİMİ VE SATIŞI

SOLAR ENERGY, HOT WATER GENERATION, SOLAR POWER GENERATION,
WIND POWER GENERATION, HEAT PUMP PRODUCTION AND APPLICATION,
ROOFING APPLICATIONS PRODUCTION AND SALE

Sertifika İlk Yayın Tarihi / 25.08.2021
Certificate First Issue Date
Sertifika Yayın Tarihi / 25.08.2021
Certificate Release Date
Sertifika Revizyon No ve Tarih / 00 / --
Certificate Revision Number and Date

Sertifika Geçerlilik Tarihi / 24.08.2022
Certificate validity Date
Sertifika No / CSMS-21-2508-EMİ
Certificate No
Belge Periyodu / 3 Yıl (Years)
Certificate Period





KIOSCERT® CERTIFICATE

Bu Sertifika / This certificate is granted to the organization

EMİNSAN GÜNEŞ ENERJİSİ İNŞ. VE MALZ. NAK. GIDA HAY. TEKS. SAN. VE TİC. LTD. ŞTİ.

Yenigün Mah. 292/40 Sok. No: 7/A Buca / İzmir / Türkiye

KIOSCERT Belgelendirme tarafından denetlenmiş ve uygulamakta olduğu
Kalite Yönetim Sisteminin

Is audited by KIOSCERT Certification and applied
Quality Management System meet the requirements of

ISO 9001:2015

standardına aşağıdaki kapsamda uymakta olduğu gözlenmiştir.

Standard for the following activities.

Belgelendirme Kapsamı / Certification Scope

GÜNEŞ ENERJİSİ, SICAK SU ÜRETİMİ, GÜNEŞ ENERJİSİ ELEKTRİK ÜRETİMİ,
RÜZGAR ENERJİSİ ELEKTRİK ÜRETİMİ, ISI POMPASI İMALATI VE UYGULAMASI,
ÇATI UYGULAMALARI ÜRETİMİ VE SATIŞI

SOLAR ENERGY, HOT WATER GENERATION, SOLAR POWER GENERATION,
WIND POWER GENERATION, HEAT PUMP PRODUCTION AND APPLICATION,
ROOFING APPLICATIONS PRODUCTION AND SALE

Sertifika İlk Yayın Tarihi / 25.08.2021

Certificate First Issue Date

Sertifika Yayın Tarihi / 25.08.2021

Certificate Release Date

Sertifika Revizyon No ve Tarih / 00 / --

Certificate Revision Number and Date

Sertifika Geçerlilik Tarihi / 24.08.2022

Certificate validity Date

Sertifika No / QMS-21-2508-EMİ

Certificate No

Belge Periyodu / 3 Yıl (Years)

Certificate Period





UYGUNLUK SERTİFİKASI

EMİNSAN GÜNEŞ ENERJİSİ İNŞAAT VE MALZEMELERİ NAKLİYE GIDA HAYVANCILIK TEKSTİL SANAYİ VE TİCARET LTD.ŞTİ.

YENİGÜN MAH. 292/40 SOK. NO: 7/A BUCA / İZMİR / TÜRKİYE

ÜRÜN: ISI POMPASI

MARKA : EMH EMİNSAN

MODELLER:ISITMA / SOĞUTMA

EMH 10 KV, EMH 12 KV, EMH 14 KV, EMH 16 KV, EMH 22 KV
EMH 32 KV, EMH 42 KV, EMH 45 KV, EMH 70 KV

İlgili Standartlar / Direktifler / Yönetmelikler

TS EN ISO 12100:2010-Makinalarda güvenlik - Tasarım için genel prensipler - Risk değerlendirilmesi ve risk azaltılması

TS EN 60204-1:2006/AC:2010-Makinalarda güvenlik - Makinaların elektrik donanımı - Bölüm 1: Genel kurallar

Sertifikasyon Zemini

Teknik Dosya No: EGE-CE-001

Üretici tarafından sunulan ve yukarıda belirtilen teknik dosya
" 2006/42/AT Makine Emniyeti Yönetmeliği " gerekliliklerine uygundur.

İlgili ürünle ilgili olarak sertifika çalışması:

- AT Uygunluk Beyanı Hazırlanması
- CE İşaretinin Ürüne Yapıştırılması

Sertifika No: AQN-TR-50329

Sertifika Düzenleme Tarihi: 24 Ağustos 2021

Sertifika Geçerlilik Tarihi: 23 Ağustos 2022

Bu sertifika, AQNCERT BELGELENDİRME EĞİTİM LTD. ŞTİ.'ne aittir ve tatmin edici gözetim denetimlerine bağlı olarak geçerliliğini sürdürür. AQNCERT BELGELENDİRME EĞİTİM LTD. ŞTİ.
Adres: Mustafa Kemal Mh. 2118 Cd. 4C-Blok No:140 Mайдan İş Merkezi Çankaya/ANKARA Tel: +90 312 543 18 10 E-Posta: info@aqncert.com.tr | Sertifikanızı sorgulamak için; www.aqncert.com.tr





CERTIFICATE OF CONFORMITY

EMİNSAN GÜNEŞ ENERJİSİ İNŞAAT VE MALZEMELERİ NAKLİYE GIDA HAYVANCILIK TEKSTİL SANAYİ VE TİCARET LTD.ŞTİ.

YENİGÜN MAH. 292/40 SOK. NO: 7/A BUCA / İZMİR / TURKEY

PRODUCT: HEAT PUMP

TRADEMARK : EMH EMİNSAN

MODELS:HEATING/COOLING

EMH 10 KV, EMH 12 KV, EMH 14 KV, EMH 16 KV, EMH 22 KV
EMH 32 KV, EMH 42 KV, EMH 45 KV, EMH 70 KV

Related Standards / Directives / Regulations

TS EN ISO 12100:2010-Safety of machinery - General principles for design - Risk assessment and risk reduction
TS EN 60204-1:2006/AC:2010-Safety of machinery - Electrical equipment of machines -- Part 1: General requirements

Certification Ground

Technical File No:EGE-CE-001

Technical file provided by the manufacturer and mentioned above complies with the requirements of "2006/42/EC Machinery Safety Directive"

Certification work related to the product:

- Preparation of EC Declaration of Conformity
- CE Marking On The Product

Certificate Number: **AQN-TR-50329**

Certificate Issue Date: **24 August 2021**

Certificate Validity Date: **23 August 2022**

This certificate is the property of AQNCERT BELGELENDİRME EGİTİM LTD. STİ. and is subject to satisfactory supervision audits. AQNCERT BELGELENDİRME EGİTİM LTD. STİ.
Address: Mustafa Kemal Mh. 2118 Cd. 4C-Blok No:140 Mайдan İş Merkezi Çankaya/ANKARA Phone: +90 312 543 18 10 E-Mail: info@aqncert.com.tr | To check this certification validity please visit www.aqncert.com.tr



OUR REFERENCES

- Hotel Grand Yilmaz Hakkari
- Otelle Hotel Mersin
- Madi Hotel Ankara
- Bilen Hotel Mardin
- Artuklu Hotel Mardin
- Tughan Hotel Mardin
- Keles Girls' Dormitory..... Canakkale
- Park Vadi Hotel Diyarbakır
- Hayal Hotel Gaziantep
- Prestij Suit Hotel..... Mersin
- Life Hotel Bodrum
- Cetinkaya Hotel..... Izmir
- Filizce Butik Hotel..... Alacati
- Grand Beyzade Hotel..... Yalova
- Omurum Hotel Izmir
- Saray Hotel Izmir
- Kocaman Hotel Izmir
- Akpinar Hotel Izmir
- Avin Hotel Izmir
- Sun Hotel Izmir
- Madi Hotel Izmir
- Sukran Hotel Izmir
- Laleli Hotel Izmir
- Guzel Izmir Hotel Izmir
- Tanik Hotel Izmir
- Antikhan Hotel Izmir
- Sirius Mi Hotel Cesme
- Maja Luxury Otel Cesme
- Madi Hotel Antalya



EMH

HEAT
PUMP

☎ 0 (232) 438 03 95

✉ www.eminsanisipompasi.com

📍 Yenigün Mahallesi, 292/40 Sokak, No: 7/A
Buca - İzmir